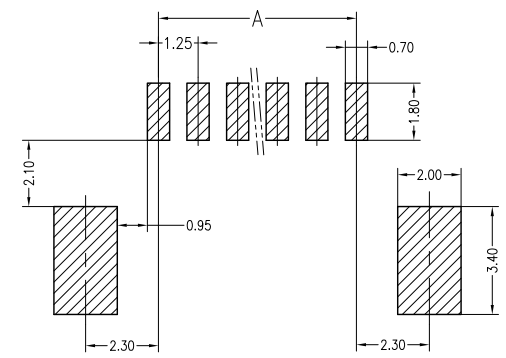
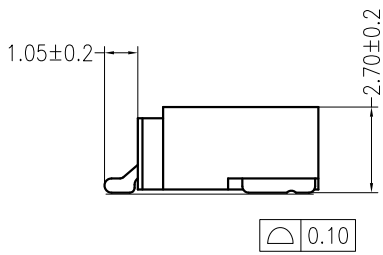
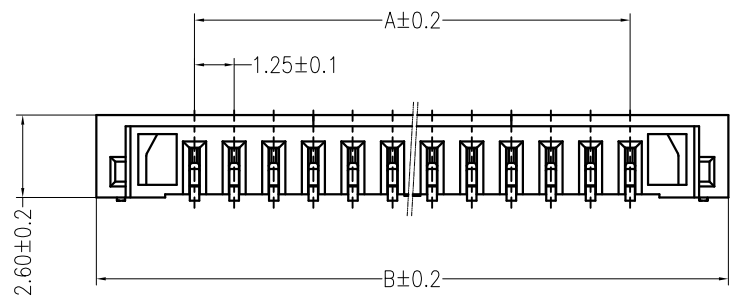
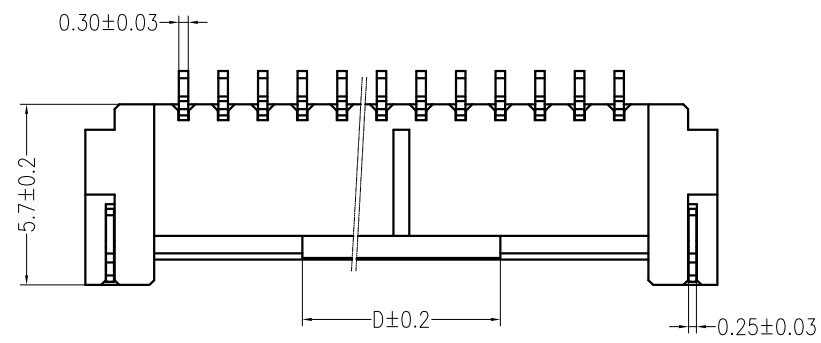


A B C D E F

REV	DESCRIPTION	DESIGN	DATE
A0	NEW RELEASE	Wudanping	2017/07/28

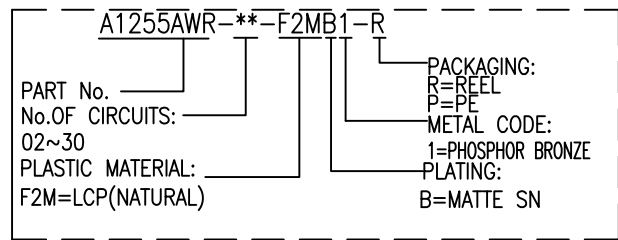


SUGGESTED PCB LAYOUT

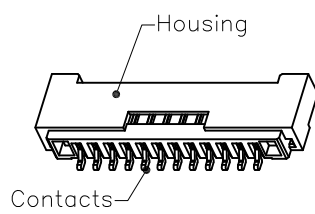
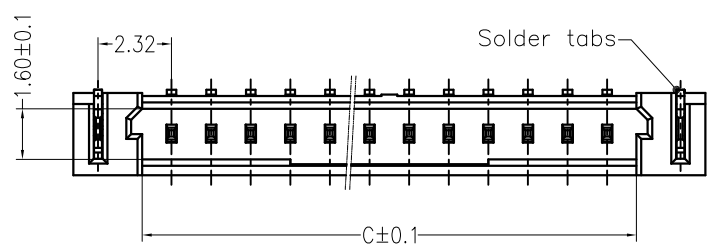


Specifications:
 Contact resistance: ≤20mΩ
 Insulation resistance: ≥500MΩ
 Rated voltage: 150V AC DC
 Rated current: 1.0A AC DC
 Withstand voltage: 500V AC/minute
 Temperature range: -25℃ ~ +85℃
 Housing: LCP UL94V-0, Natural
 Contacts: Phosphor bronze/Matte sn
 Solder tabs: Phosphor bronze/Matte sn

ORDER INFORMATION:



孔位	DIM A	DIM B	DIM C	DIM D
2pin	1.25	7.45	3.05	2.50
3pin	2.50	8.70	4.30	3.00
4pin	3.75	9.95	5.55	3.75
5pin	5.00	11.20	6.80	5.00
6pin	6.25	12.45	8.05	
7pin	7.50	13.70	9.30	
8pin	8.75	14.95	10.55	
9pin	10.00	16.20	11.80	
10pin	11.25	17.45	13.05	
11pin	12.50	18.70	14.30	
12pin	13.75	19.95	15.55	
13pin	15.00	21.20	16.80	
14pin	16.25	22.45	18.05	
15pin	17.50	23.70	19.30	
*16pin	18.75	24.95	20.55	
*17pin	20.00	26.20	21.80	
*18pin	21.25	27.45	23.05	
*19pin	22.50	28.70	24.30	
*20pin	23.75	29.95	25.55	
*21pin	25.00	31.20	26.80	
*22pin	26.25	32.45	28.05	
*23pin	27.50	33.70	29.30	
*24pin	28.75	34.95	30.55	
*25pin	30.00	36.20	31.80	
*26pin	31.25	37.45	33.05	
*27pin	32.50	38.70	34.30	
*28pin	33.75	39.95	35.55	
*29pin	35.00	41.20	36.80	
30pin	36.25	42.45	38.05	



3D VIEWS

JKUN 温州健坤接插件有限公司 WENZHOU JKUN CONNECTOR CO.,LTD.		TITLE: 1.25mmPITCH 90°WAFER SMT TYPE	
GENERAL TOLERANCE		USE:	PART NO.:
X. ±0.50	X. ±5°	CUSTOMER	A1255AWR-**-F2MB1-R
X.X ±0.30	X.X ±2°	APPD: Shaojinghe	DWG NO.:
X.XX ±0.20	X.XX ±1°	CHKD: Zenglingqing	JKUN/GCKH-0718
UNITS: mm	DR: Jiangjanyin	SCALE	SHEET
		1 : 1	1 / 1

A B C D E F

1
2
3
4
5

1
2
3
4